

Technical Specification >>>

Print	
Model	MORPHO 2513UV Pro
Print Size	2500*1300mm
Print Head	3~6 industrial print head
Production	33 sqm/h 59 sqm/h
Quality	22 sqm/h 47 sqm/h
Sup	17 sqm/h 34 sqm/h
Resolution	Up to 2400dpi
Print Technology	Piezoelectric inkjet, Grayscale Technology
Ink Types	LED UV curable ink
Ink Configuration	Standard CMYK, LcLm/White(optional)
Ink cartridge size	2.5 Liter
Image process Software	Aurelon , Caldera, Onyx Optional
Color management	ICC based color, adjustment curves, density adjustment
Operating System	Windows 10 64bits USB2.0/3.0 Hard Ware 500G+
File format	Tiff, Jpeg, Postscript, EP/ PDF, etc
Media	
Media Thickness	0 - 10cm
Platform	Divided into 4 independent suction area for various media size printing
Media	Acrylic,wood,glass,ceramic,metal,PVC,industrial film,etc.
Ink Supply	
	Negative pressure system
	Ink level sensor to alarm
Curing System	
	LED UV lamps
Dimensions	
Printer	4640mm(L)*2700mm(W)*1530mm(H)
Package	4940mm(L)*2250mm(W)*2000mm(H)
Weight	
Printer	1500KG
Package	2000KG
Operating Conditions	
Temperature	20 to 30°C
Relative Humidity	35% - 70%, non-condensing
Electricity Request	
Power	6000W 28A
Requirements	220 VAC, single-phase, 50Hz
Warranty	
	One year limited warranty(Please contact your local dealer for details)

Plamac

SHENZHEN PLAMAC TECHNOLOGY CO.LTD

WWW.PLAMACPRINTER.COM

Email: sales@plamacprinter.com



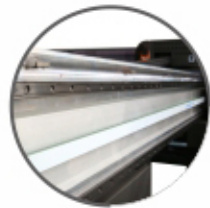
MORPHO 2513UV Pro

2400DPI VDS 2.5*1.3m



MORPHO 2513UV Pro flatbed printer is the most reliable flatbed printing solutions after a accumulation of 15years+ technical research & development, with a extremely high precision platform structure, the top resolution industrial print heads to fulfill the best photo finishing.

Description >>>



Double linear guide and strengthened carriage beam to ensure the best movement, perfectly locates the prints either on hard or flexible material at difference limited within 0.02-0.05mm.



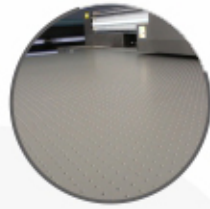
Anti-static devices equipped to eliminate bad influence from printing.



Print head auto capping system, auto height adjustment, individual color channel to purge.



Electronic control on 4 individual platform area, easy shift between suction & blower, easy load & unload the most variable kinds of media.



High precision platform with user-friendly dividing ruler.



IGUS chain to ensure the best movement.



Precisely synchronised with the double Y-axis, mostly reliable design with PLAMAC patent



White ink recycling system to keep white printing consistency and none of blockage.



Double negative pressure system for colors and white respectively, to keep the fluency.



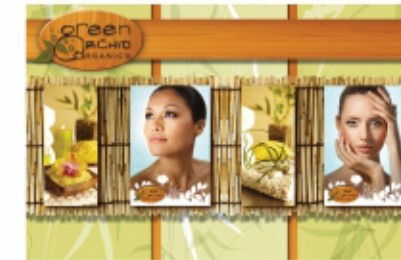
Unique design of hollowing out on printer backside, allow operator to move closer to the workbench.

Features >>>



- Grayscale printing technology with variable drop sizes minimum from 4pl to 14pl, result in photographic finish
- Extremely wide application on Acrylic, wood, glass, ceramic, metal, leather, PVC, industrial film, etc
- Up to 16 kinds of white printing mode with base, cover, spot, etc
- Three layers printing, can print color+white+color simultaneously; Five layers printing technology under process.
- CMYK+LcLm/White specification to accomplish what a photo finishing requires. fulfill the application or the speed to the max at one printer
- Adopted from grayscale printing technology, ink saving up to 30-50% thru jetting control of various ink drop size.
- Environmental friendly LED UV ink

Application >>>



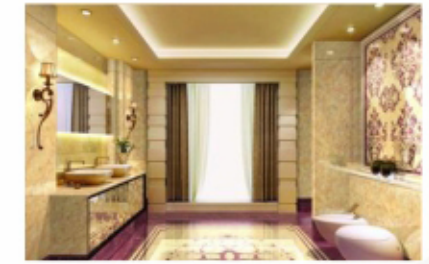
POP



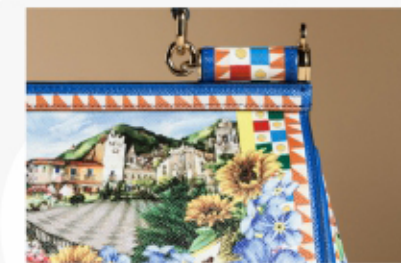
GLASS



WOOD



CERAMIC



LEATHER



WALL PAPER