

Specification

Prepared	Checked	Approved	Accepted	Confirmed	Approved

CE

RoHS

5050
SMD

60
LEDs

LED
Strip

DC
12V

IP
20

3
Years

Model: ☉ RN0060AQ

5000*10, 300pcs 5050SMD LEDs, 12V DC, constant voltage,
non-waterproof RGB flexible strip

Features:

- ☉ 5050 SMD LEDs mounted;
- ☉ Can be cut at the printed marks;
- ☉ Certification: CE, RoHS.

Picture:

Applications:

- ☉ Suitable for cover and contour lighting etc, in KTV, hotel, shopping mall, home, cabinet and so on.

Warranty:

- ☉ 3 years or 13,000 hours, whichever comes first.

Optical and Electrical Parameters:

P/N	LED Color	CCT (K) WL (nm)	CRI	SDCM	Beam Angle (°)	Luminous Flux (lm/m)	Luminous Efficacy (lm/w)	Working voltage (VDC)	Working current(mA)		Power(w)	
									1m[39.37in]	5m[196.85in]	1m[39.37in]	5m[196.85in]
RN0060AQ	Red	620-625	--	--	115	71	--	12	1083	3750	13	45
RN0060AQ	Green	525-530	--	--	115	150	--	12	1083	3750	13	45
RN0060AQ	Blue	465-470	--	--	115	48	--	12	1083	3750	13	45

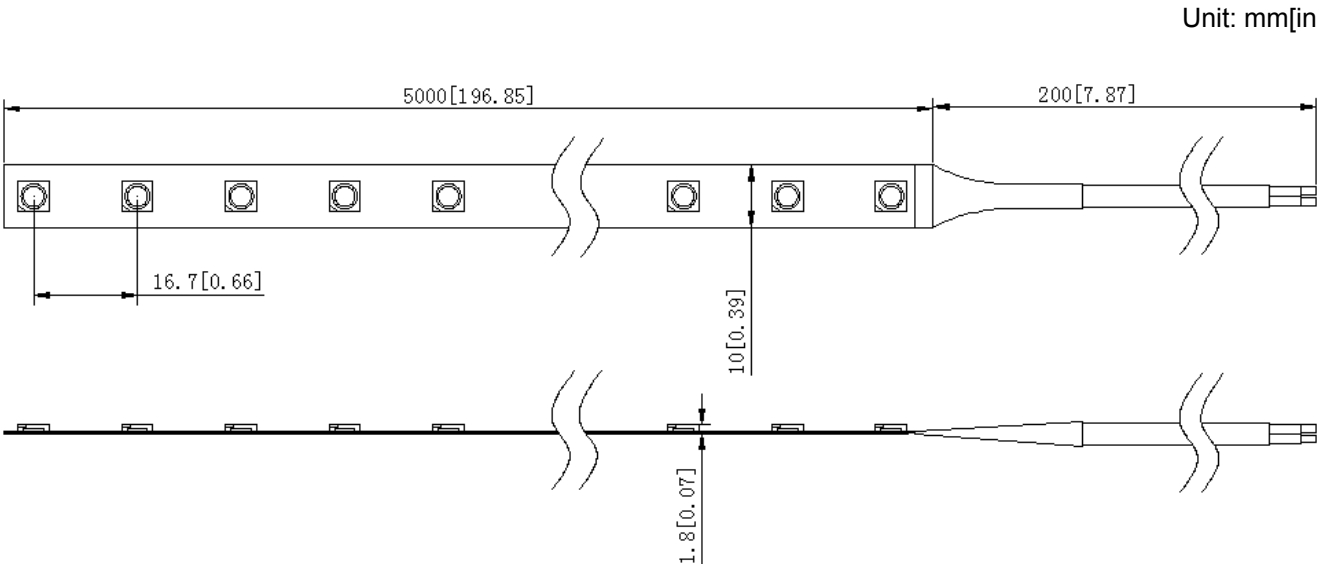
Others:

P/N	IP Grade	Operating Temp		Storage Temp		Standard length		Max. cascading length		LED Qty (pcs)	Weight	
		(°C)	(°F)	(°C)	(°F)	(m)	(inch)	(m)	(inch)		(g/m)	(lb/m)
RN0060AQ	IP20	-25~+60	-13~+140	-25~+70	-13~+158	5	196.85	5	196.85	60	/	/

Notes:

- (1) Testing environment temperature: 25±2℃ [77±3.6°F];
- (2) The above data are typical values; the actual data of each single product could differ from the typical values. The data subject to change without prior notice;
- (3) The above luminous flux is based on the monochromatic strip;
- (4) Bending radius≥5cm, not suitable for channel letter application;
- (5) The above "--" means the parameters are not required temporarily.

Profile Drawings:

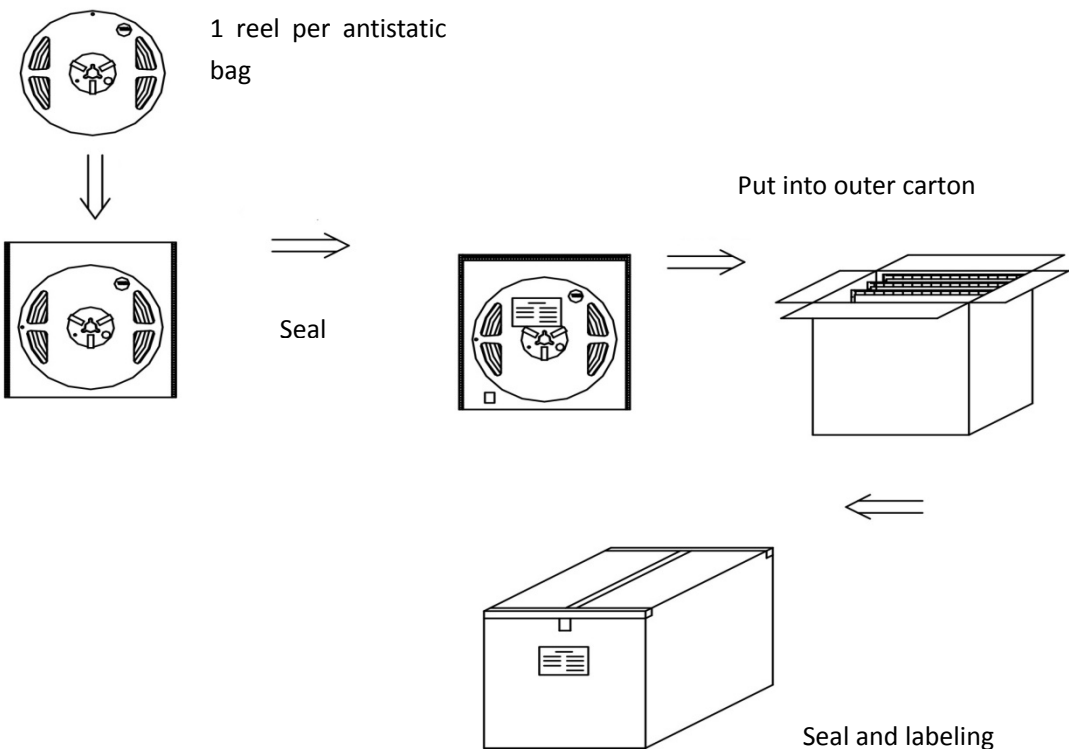


Packaging Information:

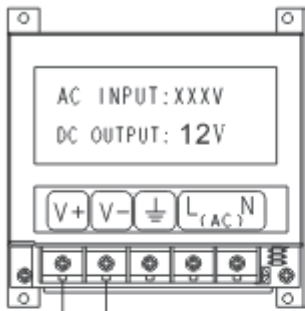
P/N	Qty (m/reel)	Qty (m/carton)	Total Qty (m)	Total weight		Outer carton size					
						length		width		height	
				(Kg)	(lb)	(mm)	(inch)	(mm)	(inch)	(mm)	(inch)
RN0060AQ	5	200	200	5.20	11.46	390	15.35	250	9.84	226	8.89

Notes: the actual packed and weight may subject to without prior notice.

Packaging Diagram:



Connection Instruction:



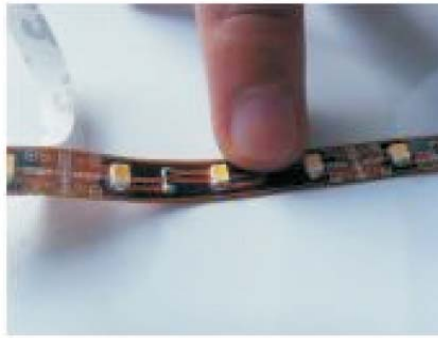
Notes: please make sure the "+" and "-" of the product's input are correctly connected to those of the power supply output.

Negative: black wire Positive: red wire

Installation Steps & Cautions:



○ Peel off the release paper.



○ Stick them to the mounting surface.



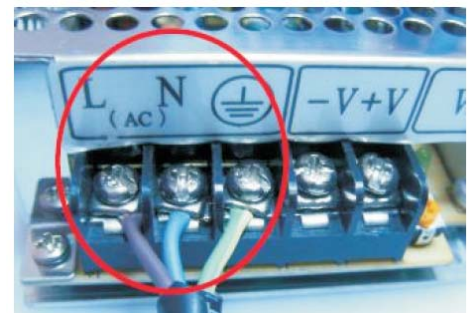
○ Mount the snap spring.



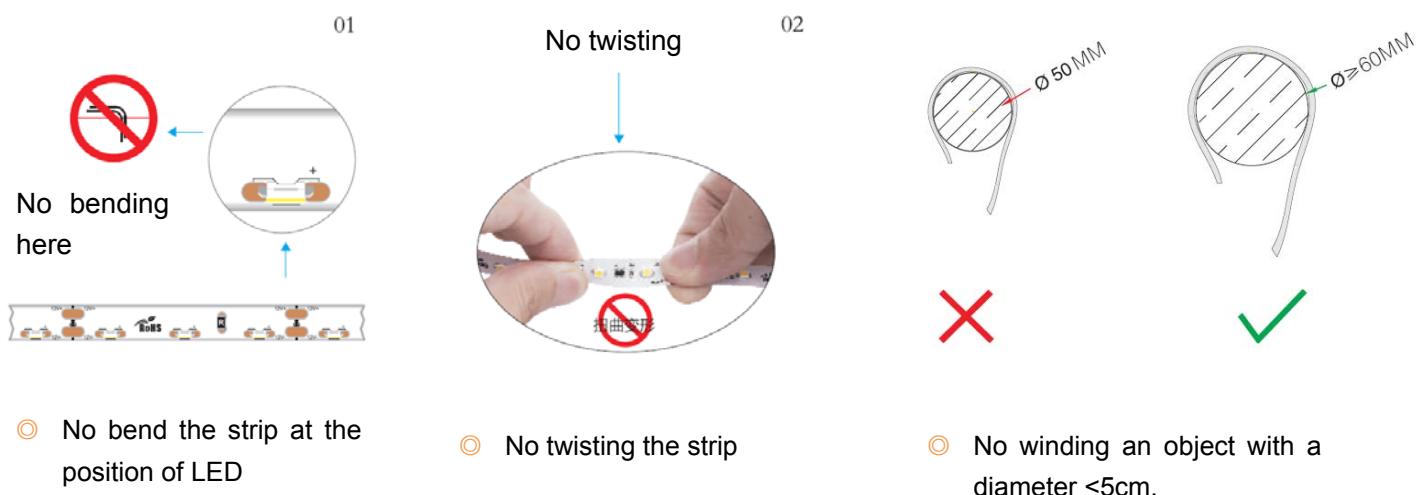
○ Installation is complete.




○ Connect the wires of power supply.



○ Connect the wires of power adapter.



Optional Parts:

Category	Part Name	Figure	Specifications/Description	Article Number	Color	IP Grade	Notes
Cable	SM female terminal		/	/	Reddish black	IP33	/

Troubleshooting:

Malfunctions	Possible Causes	Solutions
All LEDs don't work	1. The power supply did not connect to power grid.	Power on
	2. No electricity due to short-circuit of external power supply.	Remove the malfunction caused by short-circuit, power on again.
	3. The wires of strip light connect to power supply output reversely.	Check the connecting and ensure the wires are connected correctly.
Part of LEDs don't work	1. Part of power supplies do not have output.	Check the power supply system.
	2. Part of wires of strip light have malfunction.	
	3. Particular strip light connected reversely.	Correct connection
Brightness of LEDs is weak or uneven	1. Overloaded power supply;	Replace it with higher power supply
	2. The power loss of power circuit is huge or the power loss of each circuit existing big difference.	Ensure working voltage of strips is within $\pm 5\%V$ of rated voltage. 1. Shorten the length of wires between the first strip and power supply or replaced with wires with bigger diameter; 2. Ensure the cascading qty of string is less than or equal to the allowed maximum cascading qty, and each strip cascading qty is well-balanced.
	3. Exceed in qty of strip light in series	Lessen the cascading qty for strip and ensure the qty for each electrical circuit is within the maximum cascading qty.
LEDs are blinking	1. Poor contacted in the joints.	Find out and tackle malfunction immediately.
	2. Failures in power supply.	Replace power supply.

Declaration:

- If the external flexible cable of light box is damaged, please replace it by its manufacturer or its service agent or qualified person to avoid a hazard.
- The specific installation and cautions please refer to the user manual.
- The given data in this specification is based on our standard product. There may be existed slight difference compared with actual products.
- All Illustrations in this specification are for reference only.
- This product is subject to change or modify without prior notice.
- RISHANG OPTOELECTRONICS CO., LTD reserves the right of final explanation for this specification.

<End>

Rishang Optoelectronics Co., Ltd (stock code: 002654)

Add: Block 2, Hongfa jiateli High-Tech. Park Tangtou Ave., Shiyan, Bao'an Shenzhen
Guang Dong, 518108, China

Tell: +86-755-36988588 E-mail: info@ledlamps.com.cn

Website: www.ledlamps.com.cn



Website



Wechat Accounts

