

Transfer Paper Laserjet Dark

Media Instruction Sheet

Transfer Paper Laserjet Dark

PLEASE READ INSTRUCTIONS THOROUGHLY BEFORE BEGINNING!

**Important: DO NOT USE INKJET TRANSFER PAPER WITH A LASER PRINTER.
Doing so will result in permanent damage to the laser printer.**

GENERAL INFORMATION



Using this Transfer paper you can design individualised clothing and personalised gifts simply by following the instructions found below. Transfer your favourite design, logo or photograph onto T-shirts, mouse-pads, cotton bags and much more. Following these step by step instructions you will achieve optimal results.

Product Handling

- Avoid fingerprints on the coated side of the media both before and after printing.
- Curled or folded sheets should not be used.
- Do not scratch the printable surface.
- Avoid exposure to moisture, conditions of high temperatures and humidity that could affect drying time and image quality.

General Printing Procedure

- Load the paper into your printer, the matt side is coated side, the reverse is printed with blue squares - Front load printers -> load printable side down (see ①) - Top load printers -> load printable side facing you (see ②)
- Follow the printer settings listed below for your printer (printer settings may vary depending on your printer version).
- Drying times depend on the printer, ink brand, ink coverage, and room conditions (low temperatures and high humidity can increase drying time).
- Store unused paper in the original package. Keep the open package in a cool, dry place. Do not store printed images or open packages in areas subject to high temperatures, high humidity and/ or direct sunlight. Note that printed colours may change if storage recommendations are ignored.

STEP ① PRINTING AND PREPARING IMAGE

- This transfer paper can be used with any standard inkjet printer please check the recommended printer settings below.
- Print image without "mirror imaging". (See illustration ① page 2).
- Single sheet feeding is recommended. (see illustration ② page 2).
- Even when printing multiply sheets always use single sheet feeding and keep prints separated for at least 10 minutes until completely dry.
- Make sure that the paper is straight and does not have any bent or creased corners
- If necessary size your image before printing. Before printing final image, print on economy paper just to check the layout out of your design.
- Important: After printing please let the print dry for at least 5 – 10 minutes. **DO NOT TOUCH THE PRINTED SURFACE.** Touching the surface when the print is not dry may damage the coating and the image.

STEP ② PRINT SETTING:

- Only use original ink recommended by your inkjet printer manufacturer.
- Only use the standard ink set. Do not use photo ink (if applicable).
- Please refer to the detailed printer setting section at the end of the instruction sheet.

STEP ③ PREPARING YOUR FABRIC FOR TRANSFER:

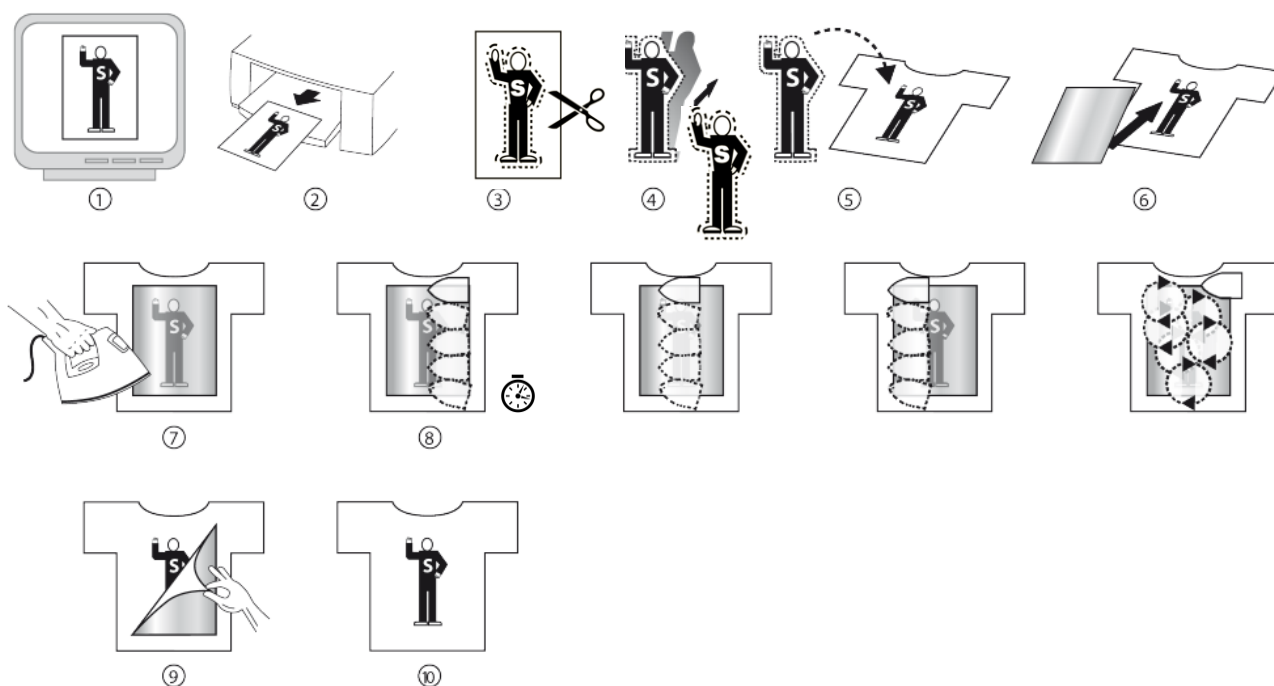
- All fabric should be washed prior to printing. Washing removes all impregnations present in the fabric and other auxiliary materials, which could lead to a bad adhesion of transferred images. Fabric should be cotton or cotton/ polyester blend (a minimum of 50% cotton is needed). Canvas is also acceptable. The best results are achieved with dark or black coloured fabric. Do not use white or light coloured fabrics.

Transfer Paper Laserjet Dark

STEP 4 - THE TRANSFER PROCESS:

- Use a flat, hard surface to iron the transfer on. **DO NOT USE IRONING BOARD!**
- Empty the water tank in the iron before using, set the iron to the cotton setting, then make sure your iron is at approx 170°C before starting **DO NOT USE STEAM SETTING!**
- Some irons get hotter than others. These instructions are made for an average iron. Test your iron by ironing a sheet of plain white paper under the same conditions needed for the transfer. Should the paper turn a yellowish-brown then the iron is TOO hot.
- Trim down the borders of the transfer paper – the unprinted area – leaving around half an inch (see illustration ③ and ④). Round off edges to avoid corners lifting after washing.
- Make sure the garment is completely flat, fluff and wrinkle free: if necessary iron it first to ensure flatness. Remove release liner by carefully tearing a corner and peeling away from the printed image. Place transfer paper with design facing upwards in desired position on fabric (see illustration ⑤). Cover image with enclosed tissue paper (see illustration ⑥). Using full upper body weight iron the entire image applying a steady and even pressure (see illustration below ⑦). Make sure that all edges are securely ironed, Make sure that the whole image has been ironed (see illustration ⑧).
- ⌚ The complete transfer time depends on the size of your image. As guideline – iron for full page 180 sec, ½ page 90 sec, ¼ page 30 seconds. Irons with steam holes on the surface need a longer transfer time.
- Follow the recommended transfer times. If the transfer time is too short and the transfer media does not adhere to the fabric the image could partially or fully peel away during the washing process. If the transfer time is too long or too much pressure is applied it is possible that the image will turn yellow.

ILLUSTRATION OF THE TRANSFER PROCESS



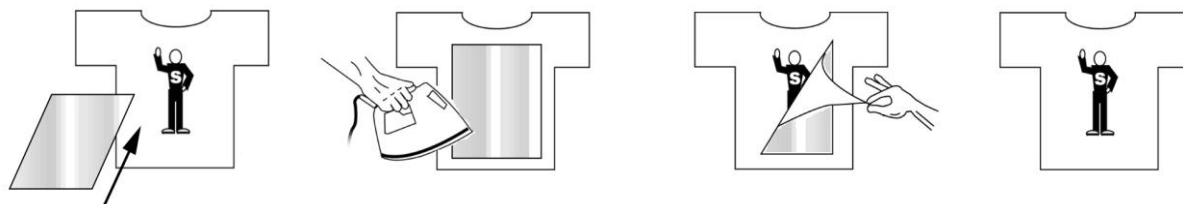
STEP 6 - COMPLETE THE TRANSFER:

- To ensure excellent adhesion of the transfer, use the tissuepaper provided and run the iron over the transfer again. This will reduce the glance of the transfer and give the fabric a more pleasant touch and feel, Iron the transfer using your full upper body weight for about 60 seconds = the time needed/ recommended for a full A4 sheet; 30 seconds for half an A4 sheet.
- **Never iron an unprotected transfer! Do not use steam!**
- Now your transfer is finished.

WASHING INSTRUCTIONS:

Transfer Paper Laserjet Dark

- Fabrics should be machine washed inside out (separately for the first time only) Wait at least 24 hrs after transfer printing before washing. Wash garments at low temperatures (max 30°C) using a standard washing detergent and a maximum spin of 800 – 1000 rotations per minute.
- Do not use softener or bleach detergents
- Remove garments immediately from washing machine after washing.
- Turn back the correct way before hanging to dry
- Tumble dry using cool settings, with low temperatures still with the garment inside out – it is better to avoid tumble drying
- To maintain an excellent coloured image and to prolong the lifetime of the image we recommend placing a silicon sheet of paper over the image to iron it again after each wash. This will refresh the colours.
- **Never iron directly on the unprotected transfer print. Do not use steam!**



- **Before removing the release paper let it cool down completely.**

RECOMMENDED PRINTER SETTINGS

EPSON 4- Colour printers

Media Type	Plain Paper
Print Quality	High quality

EPSON 6- Colour printers

Media Type	Plain Paper
Print Quality	standard, lower the thickness value in print options (-12)

HEWLETT PACKARD

Paper Type	Plain Paper
Print Quality	High quality

CANON

Media Type	Plain Paper
Print Quality	High quality

*Printer settings refer to the latest printer drivers available. Recommended printer settings are based on achieving optimal print quality for a photorealistic image. For different types of application, different printer settings may apply. This Transfer Paper is a speciality product and slide colour variations are normal and within specifications.

TROUBLE SHOOTING GUIDE

- **Colours are bleeding / feathering:** Reduce amount of ink coverage in the printer settings or avoid exposure to moisture.
- **Seems to have cracks and the edges are peeling after washing:** Follow the instructions carefully – use strong pressure, the right heat setting, as well as ironing time – use a stopwatch. Remember large images need more time.
- **Edges lift off:** Make sure the edges are rounded. Sharp edges have tendency to lift off, especially after multiple washes.